

Anti-ZFP36L2 antibody (350-400) (STJ503576)

STJ503576

GENERAL INFORMATION

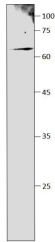
Product Type	Primary antibodies
Short Description	Rabbit polyclonal antibody anti-ZFP36L2 (350-400) is suitable for use in ELISA, Immunohistochemistry, Immunoprecipitation and Western Blot research applications.
Applications	ELISA, IHC, IP, WB
Host/Source	Rabbit
Reactivity	Human, Mouse, Rat

PRODUCT PROPERTIES

Clonality	Polyclonal
Clone ID	
Concentration	0.5 µg/µl
Conjugation	Unconjugated
Purification	Affinity Purified
Dilution Range	WB: 1:150-1:500 ELISA: 1:10, 000 IP: 1:150 IHC: 1:50-1:100
Formulation	
Isotype	IgG
Storage Instruction	Store at -20°C for long term storage. Avoid freeze-thaw cycles.

TARGET INFORMATION

Gene ID	678
Gene Symbol	ZFP36L2
Uniprot ID	TISD_HUMAN
Immunogen	Synthetic peptide taken within amino acid region 350-400 on human Zinc finger protein 36, C3H1 type-like 2.
Immunogen Region	350-400
Specificity	
Immunogen Sequence	



Western blot with Anti-ZFP36L2 Antibody (STJ503576) on mouse large intestine at 1:150 dilution in 1% milk.