

Anti-ZFP36L1 antibody (200-250) (STJ503573)

STJ503573

GENERAL INFORMATION

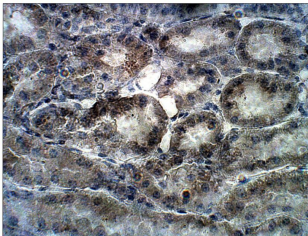
| | |
|--------------------------|---|
| Product Type | Primary antibodies |
| Short Description | Rabbit polyclonal antibody anti-ZFP36L1 (200-250) is suitable for use in ELISA, Immunohistochemistry, Immunoprecipitation and Western Blot research applications. |
| Applications | ELISA, IHC, IP, WB |
| Host/Source | Rabbit |
| Reactivity | Human, Mouse, Rat |

PRODUCT PROPERTIES

| | |
|-----------------------|---|
| Clonality | Polyclonal |
| Clone ID | |
| Concentration | 0.5 µg/µl |
| Conjugation | Unconjugated |
| Purification | Affinity Purified |
| Dilution Range | WB: 1:500 ELISA: 1:10,000 IP: 1:150 IHC: 1:50-1:100 RIP: 3 µg |
| Formulation | |
| Isotype | IgG |
| Storage | Store at -20°C for long term storage. Avoid freeze-thaw cycles. |
| Instruction | |

TARGET INFORMATION

| | |
|---------------------------|---|
| Gene ID | 677 |
| Gene Symbol | ZFP36L1 |
| Uniprot ID | TISB_HUMAN |
| Immunogen | Synthetic peptide taken within amino acid region 200-250 on human Zinc finger protein 36, C3H1 type-like 1. |
| Immunogen Region | 200-250 |
| Specificity | |
| Immunogen Sequence | |



Immunohistochemistry of baboon kidney with Anti-ZFP36L1 primary antibody (STJ503573) at 1:50 dilution in Buffer. Section was treated with DAB and Haematoxylin stain. Magnification is at 40X.

This product is suitable for in-vitro studies under the RESEARCH USE ONLY [RUO] licence. This product must not be used as for diagnostic or other medical purposes.
St John's Laboratory Ltd, Knowledge Dock Business Centre, University Way, London, E16 2RD | Tel: 0208 223 3081