

Anti-ZDHHC9 antibody (250-300) (STJ503570)

STJ503570

GENERAL INFORMATION

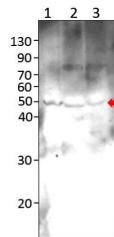
Product Type	Primary antibodies
Short Description	Rabbit polyclonal antibody anti-ZDHHC9 (250-300) is suitable for use in ELISA, Immunohistochemistry, Immunoprecipitation and Western Blot research applications.
Applications	ELISA, IHC, IP, WB
Host/Source	Rabbit
Reactivity	Human, Mouse, Rat

PRODUCT PROPERTIES

Clonality	Polyclonal
Clone ID	
Concentration	0.50 µg/µl
Conjugation	Unconjugated
Purification	Affinity Purified
Dilution Range	WB: 1:500 ELISA: 1:10, 000 IP: 1:200 IHC: 1:50-1:100
Formulation	
Isotype	IgG
Storage Instruction	Store at -20°C for long term storage. Avoid freeze-thaw cycles.

TARGET INFORMATION

Gene ID	51114
Gene Symbol	ZDHHC9
Uniprot ID	ZDHC9_HUMAN
Immunogen	Synthetic peptide taken within amino acid region 250-300 on human Palmitoyltransferase ZDHHC9 protein.
Immunogen Region	250-300
Specificity	
Immunogen Sequence	



Western blot with Anti-ZDHHC9 Antibody (STJ503570) on rat: 1) Skeletal muscle, 2) Cortex, 3) Spinal cord. Antibody at 1:500 dilution in buffer.