

## Anti-VPS36 antibody (250-310) (STJ503503)

STJ503503

### GENERAL INFORMATION

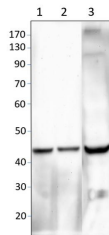
<b>Product Type</b>	Primary antibodies
<b>Short Description</b>	Rabbit polyclonal antibody anti-VPS36 (250-310) is suitable for use in ELISA, Immunoprecipitation and Western Blot research applications.
<b>Applications</b>	ELISA, IP, WB
<b>Host/Source</b>	Rabbit
<b>Reactivity</b>	Human

### PRODUCT PROPERTIES

<b>Clonality</b>	Polyclonal
<b>Clone ID</b>	
<b>Concentration</b>	0.5-1.5 µg/µl
<b>Conjugation</b>	Unconjugated
<b>Purification</b>	Affinity Purified
<b>Dilution Range</b>	WB: 1:2, 500-1:5, 000 ELISA: 1:50, 000 IP: 1:200
<b>Formulation</b>	
<b>Isotype</b>	IgG
<b>Storage Instruction</b>	Store at -20°C for long term storage. Avoid freeze-thaw cycles.

### TARGET INFORMATION

<b>Gene ID</b>	51028
<b>Gene Symbol</b>	VPS36
<b>Uniprot ID</b>	VPS36_HUMAN
<b>Immunogen</b>	Synthetic peptide taken within amino acid region 250-310 on human Vacuolar Protein-Sorting-associated protein 36 protein.
<b>Immunogen Region</b>	250-310
<b>Specificity</b>	
<b>Immunogen Sequence</b>	



Western blot with Anti-VPS36 Antibody (STJ503503) on  
1) Mouse kidney, 2) Mouse kidney, 3) Rat heart.  
Antibody at 1:750 dilution in buffer.

This product is suitable for in-vitro studies under the RESEARCH USE ONLY [RUO] licence. This product must not be used as for diagnostic or other medical purposes.  
St John's Laboratory Ltd, Knowledge Dock Business Centre, University Way, London, E16 2RD | Tel: 0208 223 3081