

## Anti-FLT1 antibody (1250-1300) (STJ503482)

STJ503482

### GENERAL INFORMATION

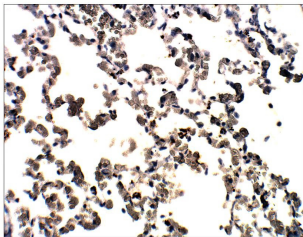
<b>Product Type</b>	Primary antibodies
<b>Short Description</b>	Rabbit polyclonal antibody anti-FLT1 (1250-1300) is suitable for use in ELISA, Immunohistochemistry, Immunoprecipitation and Western Blot research applications.
<b>Applications</b>	ELISA, IHC, IP, WB
<b>Host/Source</b>	Rabbit
<b>Reactivity</b>	Human, Monkey

### PRODUCT PROPERTIES

<b>Clonality</b>	Polyclonal
<b>Clone ID</b>	
<b>Concentration</b>	0.5-1.5 µg/µl
<b>Conjugation</b>	Unconjugated
<b>Purification</b>	Affinity Purified
<b>Dilution Range</b>	WB: 1:2, 500-1:5, 000 ELISA: 1:50, 000 IP: 1:200 IHC: 1:100
<b>Formulation</b>	
<b>Isotype</b>	IgG
<b>Storage Instruction</b>	Store at -20°C for long term storage. Avoid freeze-thaw cycles.

### TARGET INFORMATION

<b>Gene ID</b>	<a href="#">2321</a>
<b>Gene Symbol</b>	<a href="#">FLT1</a>
<b>Uniprot ID</b>	<a href="#">VGFR1_HUMAN</a>
<b>Immunogen</b>	Synthetic peptide taken within amino acid region 1250-1300 on human Vascular endothelial growth factor receptor 1 protein.
<b>Immunogen Region</b>	1250-1300
<b>Specificity</b>	
<b>Immunogen Sequence</b>	



Immunohistochemistry of baboon lung with Anti-FLT1 primary antibody (STJ503482) at 1:100 dilution in Buffer. Section was treated with DAB and Haematoxylin stain. Magnification is at 40X.