

Anti-ULK1 antibody (1000-1050) {FITC} (STJ503463)

STJ503463

GENERAL INFORMATION

Product Type	Primary antibodies
Short Description	Rabbit polyclonal antibody anti-ULK1 (1000-1050) is suitable for use in ELISA, Immunofluorescence, Immunoprecipitation and Western Blot research applications.
Applications	ELISA, IF, IP, WB
Host/Source	Rabbit
Reactivity	Bovine, Human, Monkey, Mouse, Panda

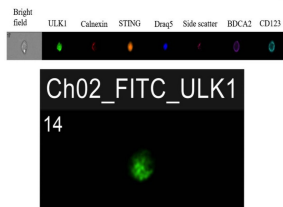
PRODUCT PROPERTIES

Clonality	Polyclonal
Clone ID	
Concentration	0.58 µg/µl
Conjugation	FITC
Purification	Affinity Purified
Dilution Range	WB: 1:250 ELISA: 1:10,000 IP: 1:200 IF: 1:100
Formulation	
Isotype	IgG
Storage Instruction	Store at -20°C for long term storage. Avoid freeze-thaw cycles.

TARGET INFORMATION

Gene ID	8408
Gene Symbol	ULK1
Uniprot ID	ULK1_HUMAN
Immunogen	Synthetic peptide taken within amino acid region 1000-1050 on mouse ULK1 protein.
Immunogen Region	1000-1050
Specificity	
Immunogen Sequence	

Expression of ULK1 in pDCs (flow imaging)



Immunostaining with Anti-ULK1 Antibody (FITC) (STJ503463) on human pDCs.

This product is suitable for in-vitro studies under the RESEARCH USE ONLY [RUO] licence. This product must not be used as for diagnostic or other medical purposes.
St John's Laboratory Ltd, Knowledge Dock Business Centre, University Way, London, E16 2RD | Tel: 0208 223 3081