

Anti-TYRO3 antibody (800-850) (STJ503444)

STJ503444

GENERAL INFORMATION

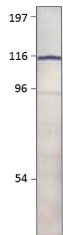
Product Type	Primary antibodies
Short Description	Rabbit polyclonal antibody anti-TYRO3 (800-850) is suitable for use in ELISA, Immunoprecipitation and Western Blot research applications.
Applications	ELISA, IP, WB
Host/Source	Rabbit
Reactivity	Human, Monkey

PRODUCT PROPERTIES

Clonality	Polyclonal
Clone ID	
Concentration	0.65 µg/µl
Conjugation	Unconjugated
Purification	Affinity Purified
Dilution Range	WB: 1:500-1:750 DB: 1:10, 000 ELISA: 1:10, 000 IP: 1:200
Formulation	
Isotype	IgG
Storage Instruction	Store at -20°C for long term storage. Avoid freeze-thaw cycles.

TARGET INFORMATION

Gene ID	7301
Gene Symbol	TYRO3
Uniprot ID	TYRO3_HUMAN
Immunogen	Synthetic peptide taken within amino acid region 800-850 on human Tyrosine-protein kinase receptor TYRO3 protein.
Immunogen Region	800-850
Specificity	
Immunogen Sequence	



Western blot with Anti-TYRO3 Antibody (STJ503444) with TYRO3 peptide. Antibody at 1:750 dilution in buffer.