

Anti-KAP1 antibody (750-834) (STJ503402)

STJ503402

GENERAL INFORMATION

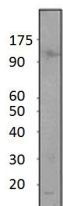
Product Type	Primary antibodies
Short Description	Rabbit polyclonal antibody anti-KAP1 (750-834) is suitable for use in ELISA and Western Blot research applications.
Applications	ELISA, WB
Host/Source	Rabbit
Reactivity	Human, Mouse, Rat

PRODUCT PROPERTIES

Clonality	Polyclonal
Clone ID	
Concentration	0.58-0.60 µg/µl
Conjugation	Unconjugated
Purification	Affinity Purified
Dilution Range	WB: 1:500 DB: 1:10, 000 ELISA: 1:10, 000
Formulation	
Isotype	IgG
Storage Instruction	Store at -20°C for long term storage. Avoid freeze-thaw cycles.

TARGET INFORMATION

Gene ID	
Gene Symbol	
Uniprot ID	
Immunogen	Synthetic peptide taken within amino acid region 750-834 on mouse TRIM28 protein.
Immunogen Region	750-834
Specificity	
Immunogen Sequence	



Western blot with Anti-KAP1 Antibody (STJ503402) with TRIM28 peptide. Antibody at 1:500 dilution in buffer.