

Anti-TERF2 antibody (80-130) (STJ503390)

STJ503390

GENERAL INFORMATION

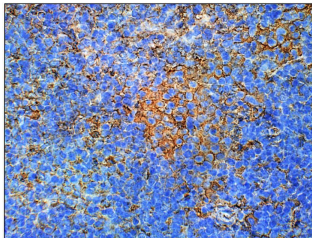
Product Type	Primary antibodies
Short Description	Rabbit polyclonal antibody anti-TERF2 (80-130) is suitable for use in ELISA, Immunohistochemistry, Immunoprecipitation and Western Blot research applications.
Applications	ELISA, IHC, IP, WB
Host/Source	Rabbit
Reactivity	Human, Mouse, Rat

PRODUCT PROPERTIES

Clonality	Polyclonal
Clone ID	
Concentration	0.50 µg/µl
Conjugation	Unconjugated
Purification	Affinity Purified
Dilution Range	WB: 1:500-1:750 DB: 1:20, 000 ELISA: 1:20, 000 IP: 1:200 IHC: 1:50-1:150
Formulation	
Isotype	IgG
Storage	Store at -20°C for long term storage. Avoid freeze-thaw cycles.
Instruction	

TARGET INFORMATION

Gene ID	7014
Gene Symbol	TERF2
Uniprot ID	TERF2_HUMAN
Immunogen	Synthetic peptide taken within amino acid region 80-130 on human Telomeric repeat-binding factor 2 protein.
Immunogen Region	80-130
Specificity	
Immunogen Sequence	



Immunohistochemistry of mouse spleen with Anti-TERF2 primary antibody (STJ503390) at 1:100 dilution in Buffer. Section was treated with DAB and Haematoxylin stain. Magnification is at 40X.

This product is suitable for in-vitro studies under the RESEARCH USE ONLY [RUO] licence. This product must not be used as for diagnostic or other medical purposes.
St John's Laboratory Ltd, Knowledge Dock Business Centre, University Way, London, E16 2RD | Tel: 0208 223 3081