

Anti-TPD52 antibody (101-151) (STJ503374)

STJ503374

GENERAL INFORMATION

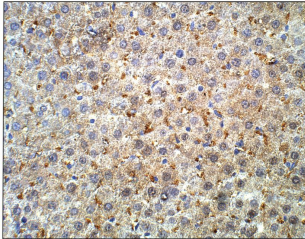
Product Type	Primary antibodies
Short Description	Rabbit polyclonal antibody anti-TPD52 (101-151) is suitable for use in ELISA and Western Blot research applications.
Applications	ELISA, WB
Host/Source	Rabbit
Reactivity	Human, Mouse, Rat

PRODUCT PROPERTIES

Clonality	Polyclonal
Clone ID	
Concentration	0.65-0.69 µg/µl
Conjugation	Unconjugated
Purification	Affinity Purified
Dilution Range	WB: 1:500-1:1,000 DB: 1:20,000-1:50,000 ELISA: 1:20,000-1:50,000 IP: 1:150 IHC: 1:50-1:100
Formulation	
Isotype	IgG
Storage Instruction	Store at -20°C for long term storage. Avoid freeze-thaw cycles.

TARGET INFORMATION

Gene ID	7163
Gene Symbol	TPD52
Uniprot ID	TPD52_HUMAN
Immunogen	Synthetic peptide taken within amino acid region 101-151 on human Prostate leucine zipper isoform 5 protein.
Immunogen Region	101-151
Specificity	
Immunogen Sequence	



Immunohistochemistry of rat liver with Anti-TPD52 primary antibody (STJ503374) at 1:50 dilution in Buffer. Section was treated with DAB and Haematoxylin stain. Magnification is at 40x.