

Anti-TPCN2 antibody (680-731) (STJ503366)

STJ503366

GENERAL INFORMATION

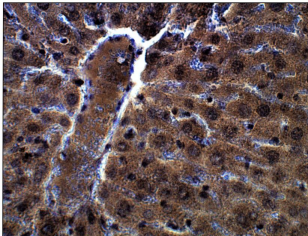
Product Type	Primary antibodies
Short Description	Rabbit polyclonal antibody anti-TPCN2 (680-731) is suitable for use in ELISA, Immunohistochemistry, Immunoprecipitation and Western Blot research applications.
Applications	ELISA, IHC, IP, WB
Host/Source	Rabbit
Reactivity	Mouse, Rat

PRODUCT PROPERTIES

Clonality	Polyclonal
Clone ID	
Concentration	0.55-0.57 µg/µl
Conjugation	Unconjugated
Purification	Affinity Purified
Dilution Range	WB: 1:500 DB: 1:10, 000 ELISA: 1:10, 000 IP: 1:200 IHC: 1:50-1:150
Formulation	
Isotype	IgG
Storage	Store at -20°C for long term storage. Avoid freeze-thaw cycles.
Instruction	

TARGET INFORMATION

Gene ID	233979
Gene Symbol	Tpcn2
Uniprot ID	TPC2_MOUSE
Immunogen	Synthetic peptide taken within amino acid region 680-731 between TMD4 and TMD5 on mouse TPC2 protein.
Immunogen Region	680-731
Specificity	
Immunogen Sequence	



Immunohistochemistry of mouse liver with Anti-TPCN2 primary antibody (STJ503366) at 1:50 dilution in Buffer. Section was treated with DAB and Haematoxylin stain. Magnification is at 40x.