

Anti-TOMM6 antibody (24-74) (STJ503351)

STJ503351

GENERAL INFORMATION

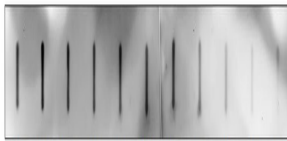
Product Type	Primary antibodies
Short Description	Rabbit polyclonal antibody anti-TOMM6 (24-74) is suitable for use in ELISA, Immunoprecipitation and Western Blot research applications.
Applications	ELISA, IP, WB
Host/Source	Rabbit
Reactivity	Bovine, Human, Monkey, Mouse, Rat

PRODUCT PROPERTIES

Clonality	Polyclonal
Clone ID	
Concentration	0.55-0.75 µg/µl
Conjugation	Unconjugated
Purification	Affinity Purified
Dilution Range	WB: 1:500 DB: 1:10, 000 ELISA: 1:10, 000 IP: 1:150
Formulation	
Isotype	IgG
Storage Instruction	Store at -20°C for long term storage. Avoid freeze-thaw cycles.

TARGET INFORMATION

Gene ID	100188893
Gene Symbol	TOMM6
Uniprot ID	TOM6_HUMAN
Immunogen	Synthetic peptide taken within amino acid region 24-74 on human Mitochondrial import receptor subunit TOM6 homolog.
Immunogen Region	24-74
Specificity	
Immunogen Sequence	



100ng 50ng 10ng 5ng 2.5ng Cng

Slot blot with Anti-TOMM6 Antibody (STJ503351) on P-TOM6 at various concentrations. Antibody at 1:250 dilution in buffer.