

Anti-TOMM5 antibody (1-50) (STJ503348)

STJ503348

GENERAL INFORMATION

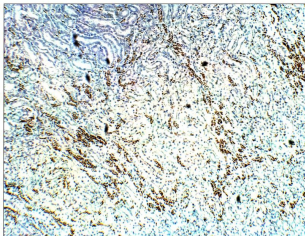
Product Type	Primary antibodies
Short Description	Rabbit polyclonal antibody anti-TOMM5 (1-50) is suitable for use in ELISA, Immunohistochemistry, Immunoprecipitation and Western Blot research applications.
Applications	ELISA, IHC, IP, WB
Host/Source	Rabbit
Reactivity	Human, Monkey, Mouse, Rat

PRODUCT PROPERTIES

Clonality	Polyclonal
Clone ID	
Concentration	0.55-0.75 µg/µl
Conjugation	Unconjugated
Purification	Affinity Purified
Dilution Range	WB: 1:500 DB: 1:10, 000 ELISA: 1:10, 000 IP: 1:150 IHC: 1:100
Formulation	
Isotype	IgG
Storage	Store at -20°C for long term storage. Avoid freeze-thaw cycles.
Instruction	

TARGET INFORMATION

Gene ID	401505
Gene Symbol	TOMM5
Uniprot ID	TOM5_HUMAN
Immunogen	Synthetic peptide taken within amino acid region 1-50 on human Mitochondrial import receptor subunit TOM5 homolog isoform 1 protein.
Immunogen Region	1-50
Specificity	
Immunogen Sequence	



Immunohistochemistry of mouse kidney with Anti-TOMM5 primary antibody (STJ503348) at 1:100 dilution in Buffer. Section was treated with DAB and Haematoxylin stain. Magnification is at 10X.

This product is suitable for in-vitro studies under the RESEARCH USE ONLY [RUO] licence. This product must not be used as for diagnostic or other medical purposes.
St John's Laboratory Ltd, Knowledge Dock Business Centre, University Way, London, E16 2RD | Tel: 0208 223 3081