

Anti-TMEPAI antibody (STJ503330)

STJ503330

GENERAL INFORMATION

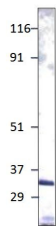
Product Type	Primary antibodies
Short Description	Rabbit polyclonal antibody anti-TMEPAI is suitable for use in ELISA and Western Blot research applications.
Applications	ELISA, WB
Host/Source	Rabbit
Reactivity	Human

PRODUCT PROPERTIES

Clonality	Polyclonal
Clone ID	
Concentration	0.65-.694 µg/µl
Conjugation	Unconjugated
Purification	Affinity Purified
Dilution Range	WB: 1:500-1:1, 000 DB: 1:20, 000-1:50, 000 ELISA: 1:20, 000-1:50, 000 IP: 1:200
Formulation	
Isotype	IgG
Storage Instruction	Store at -20°C for long term storage. Avoid freeze-thaw cycles.

TARGET INFORMATION

Gene ID	
Gene Symbol	
Uniprot ID	
Immunogen	Purified TMEPAI protein which was emulsified with adjuvants to achieve the desired antigenicity.
Immunogen Region	
Specificity	
Immunogen Sequence	



Western blot with Anti-TMEPAI Antibody (STJ503330) on human PC1 cells. Antibody at 1:500 dilution in buffer.