

Anti-TM6SF2 antibody (325-375) (STJ503313)

STJ503313

GENERAL INFORMATION

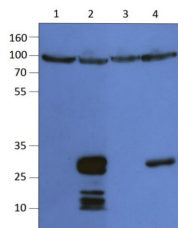
Product Type	Primary antibodies
Short Description	Rabbit polyclonal antibody anti-TM6SF2 (325-375) is suitable for use in Dot Blot, ELISA, Immunoprecipitation and Western Blot research applications.
Applications	DB, ELISA, IP, WB
Host/Source	Rabbit
Reactivity	Human

PRODUCT PROPERTIES

Clonality	Polyclonal
Clone ID	
Concentration	0.68-0.70 µg/µl
Conjugation	Unconjugated
Purification	Affinity Purified
Dilution Range	WB: 1:250 DB: 1:4, 000 ELISA: 1:4, 000 IP: 1:150
Formulation	
Isotype	IgG
Storage Instruction	Store at -20°C for long term storage. Avoid freeze-thaw cycles.

TARGET INFORMATION

Gene ID	107770
Gene Symbol	Tm6sf2
Uniprot ID	TM6S2_MOUSE
Immunogen	Synthetic peptide taken within amino acid region 325-375 on human TM6SF2 protein.
Immunogen Region	325-375
Specificity	
Immunogen Sequence	



Western blot with Anti-TM6SF2 Antibody (STJ503312) on 1) Empty vehicle, 2) Recombinant mouse TM6SF2, 3) Empty vehicle, 4) Recombinant human TM6SF2. Antibody at 1:500 dilution in buffer. STJ503312 on lanes 1 & 2. STJ503313 on lanes 2 & 4.

This product is suitable for in-vitro studies under the RESEARCH USE ONLY [RUO] licence. This product must not be used as for diagnostic or other medical purposes.
St John's Laboratory Ltd, Knowledge Dock Business Centre, University Way, London, E16 2RD | Tel: 0208 223 3081