

Anti-TM6SF1 antibody (320-370) (STJ503309)

STJ503309

GENERAL INFORMATION

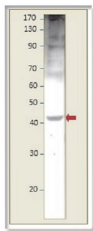
Product Type	Primary antibodies
Short Description	Rabbit polyclonal antibody anti-TM6SF1 (320-370) is suitable for use in ELISA and Western Blot research applications.
Applications	ELISA, WB
Host/Source	Rabbit
Reactivity	Human, Mouse, Rat

PRODUCT PROPERTIES

Clonality	Polyclonal
Clone ID	
Concentration	0.56 µg/µl
Conjugation	Unconjugated
Purification	Affinity Purified
Dilution Range	WB: 1:500 DB: 1:10, 000 ELISA: 1:10, 000
Formulation	
Isotype	IgG
Storage Instruction	Store at -20°C for long term storage. Avoid freeze-thaw cycles.

TARGET INFORMATION

Gene ID	53346
Gene Symbol	TM6SF1
Uniprot ID	TM6S1_HUMAN
Immunogen	Synthetic peptide taken within amino acid region 320-370 on human TM6SF1 protein.
Immunogen Region	320-370
Specificity	
Immunogen Sequence	



Western blot with Anti-TM6SF1 Antibody (STJ503309)
T47D cells. Antibody at 1:500 dilution in buffer.