

Anti-TLR6 antibody (195-225) (STJ503280)

STJ503280

GENERAL INFORMATION

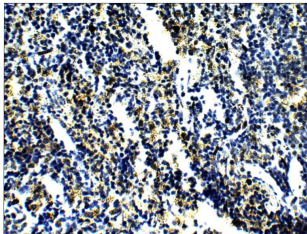
| | |
|--------------------------|--|
| Product Type | Primary antibodies |
| Short Description | Rabbit polyclonal antibody anti-TLR6 (195-225) is suitable for use in ELISA, Immunohistochemistry, Immunoprecipitation and Western Blot research applications. |
| Applications | ELISA, IHC, IP, WB |
| Host/Source | Rabbit |
| Reactivity | Cat, Human, Mouse, Pig, Rat |

PRODUCT PROPERTIES

| | |
|-----------------------|---|
| Clonality | Polyclonal |
| Clone ID | |
| Concentration | 0.78-0.80 µg/µl |
| Conjugation | Unconjugated |
| Purification | Affinity Purified |
| Dilution Range | WB: 1:500 DB: 1:20, 000 ELISA: 1:20, 000 IP: 1:200 IHC: 1:100 |
| Formulation | |
| Isotype | IgG |
| Storage | Store at -20°C for long term storage. Avoid freeze-thaw cycles. |
| Instruction | |

TARGET INFORMATION

| | |
|---------------------------|---|
| Gene ID | 10333 |
| Gene Symbol | TLR6 |
| Uniprot ID | TLR6_HUMAN |
| Immunogen | Synthetic peptide taken within amino acid region 195-225 on human TLR6 protein. |
| Immunogen Region | 195-225 |
| Specificity | |
| Immunogen Sequence | |



Immunohistochemistry with Anti-TLR6 Antibody (STJ503280) at 1:100 dilution in Buffer. DAB (brown) staining and Haematoxylin QS (blue) counterstain. 40x magnification on Leica DM4000. FFPE section.

This product is suitable for in-vitro studies under the RESEARCH USE ONLY [RUO] licence. This product must not be used as for diagnostic or other medical purposes.
St John's Laboratory Ltd, Knowledge Dock Business Centre, University Way, London, E16 2RD | Tel: 0208 223 3081