

Anti-TLR4 antibody (970-1000) (STJ503278)

STJ503278

GENERAL INFORMATION

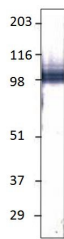
| | |
|--------------------------|--|
| Product Type | Primary antibodies |
| Short Description | Rabbit polyclonal antibody anti-TLR4 (970-1000) is suitable for use in ELISA and Western Blot research applications. |
| Applications | ELISA, WB |
| Host/Source | Rabbit |
| Reactivity | Human |

PRODUCT PROPERTIES

| | |
|----------------------------|---|
| Clonality | Polyclonal |
| Clone ID | |
| Concentration | 0.66-0.8 µg/µl |
| Conjugation | Unconjugated |
| Purification | Affinity Purified |
| Dilution Range | WB: 1:500 DB: 1:20, 000 ELISA: 1:20, 000 |
| Formulation | |
| Isotype | IgG |
| Storage Instruction | Store at -20°C for long term storage. Avoid freeze-thaw cycles. |

TARGET INFORMATION

| | |
|---------------------------|--|
| Gene ID | 7099 |
| Gene Symbol | TLR4 |
| Uniprot ID | TLR4_HUMAN |
| Immunogen | Synthetic peptide taken within amino acid region 970-1000 on human TLR4 protein. |
| Immunogen Region | 970-1000 |
| Specificity | |
| Immunogen Sequence | |



Western blot with Anti-TLR4 Antibody (STJ503278) with TLR4 peptide. Antibody at 1:500 dilution in buffer.

This product is suitable for in-vitro studies under the RESEARCH USE ONLY [RUO] licence. This product must not be used as for diagnostic or other medical purposes.
St John's Laboratory Ltd, Knowledge Dock Business Centre, University Way, London, E16 2RD | Tel: 0208 223 3081