

## Anti-TLR3 antibody (650-700) (STJ503277)

STJ503277

### GENERAL INFORMATION

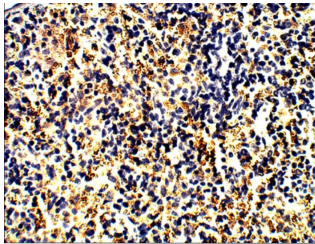
<b>Product Type</b>	Primary antibodies
<b>Short Description</b>	Rabbit polyclonal antibody anti-TLR3 (650-700) is suitable for use in ELISA, Immunohistochemistry, Immunoprecipitation and Western Blot research applications.
<b>Applications</b>	ELISA, IHC, IP, WB
<b>Host/Source</b>	Rabbit
<b>Reactivity</b>	Human, Mouse, Rat

### PRODUCT PROPERTIES

<b>Clonality</b>	Polyclonal
<b>Clone ID</b>	
<b>Concentration</b>	0.65-0.77 µg/µl
<b>Conjugation</b>	Unconjugated
<b>Purification</b>	Affinity Purified
<b>Dilution Range</b>	WB: 1:500 ELISA: 1:20, 000 IP: 1:200 IHC: 1:100
<b>Formulation</b>	
<b>Isotype</b>	IgG
<b>Storage Instruction</b>	Store at -20°C for long term storage. Avoid freeze-thaw cycles.

### TARGET INFORMATION

<b>Gene ID</b>	7098
<b>Gene Symbol</b>	TLR3
<b>Uniprot ID</b>	TLR3_HUMAN
<b>Immunogen</b>	Synthetic peptide taken within amino acid region 650-700 on human TLR3 protein.
<b>Immunogen Region</b>	650-700
<b>Specificity</b>	
<b>Immunogen Sequence</b>	



Immunohistochemistry of rat spleen with Anti-TLR3 primary antibody (STJ503277) at 1:100 dilution in Buffer. Section was treated with DAB and Haematoxylin stain. Magnification is at 40X.