

Anti-TLR10 antibody (380-430) (STJ503273)

STJ503273

GENERAL INFORMATION

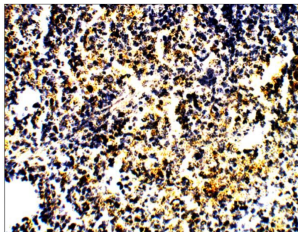
Product Type	Primary antibodies
Short Description	Rabbit polyclonal antibody anti-TLR10 (380-430) is suitable for use in ELISA, Immunocytochemistry, Immunofluorescence, Immunohistochemistry, Immunoprecipitation and Western Blot research applications.
Applications	ELISA, ICC, IF, IHC, IP, WB
Host/Source	Rabbit
Reactivity	Chimpanzee, Human, Monkey, Rat

PRODUCT PROPERTIES

Clonality	Polyclonal
Clone ID	
Concentration	0.55-0.67 µg/µl
Conjugation	Unconjugated
Purification	Affinity Purified
Dilution	WB: 1:500
Range	ELISA: 1:20, 000 IP: 1:200 IHC: 1:100 ICC: 1:100 IF: 1:100
Formulation	
Isotype	IgG
Storage	Store at -20°C for long term storage. Avoid freeze-thaw cycles.
Instruction	

TARGET INFORMATION

Gene ID	81793
Gene Symbol	TLR10
Uniprot ID	TLR10_HUMAN
Immunogen	Synthetic peptide taken within amino acid region 380-430 on human TLR10 protein.
Immunogen Region	380-430
Specificity	
Immunogen Sequence	



Immunohistochemistry of rat spleen with Anti-TLR10 primary antibody (STJ503273) at 1:100 dilution in Buffer. Section was treated with DAB and Haematoxylin stain. Magnification is at 40X.