

Anti-TIPIN antibody (240-270) (STJ503263)

STJ503263

GENERAL INFORMATION

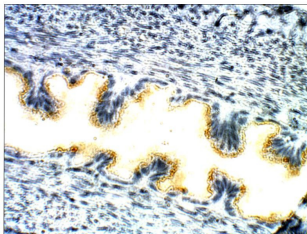
Product Type	Primary antibodies
Short Description	Rabbit polyclonal antibody anti-TIPIN (240-270) is suitable for use in ELISA, Immunohistochemistry, Immunoprecipitation and Western Blot research applications.
Applications	ELISA, IHC, IP, WB
Host/Source	Rabbit
Reactivity	Human, Mouse, Rat

PRODUCT PROPERTIES

Clonality	Polyclonal
Clone ID	
Concentration	0.96-0.98 µg/µl
Conjugation	Unconjugated
Purification	Affinity Purified
Dilution Range	WB: 1:500 DB: 1:10, 000 ELISA: 1:10, 000 IP: 1:200 IHC: 1:100
Formulation	
Isotype	IgG
Storage	Store at -20°C for long term storage. Avoid freeze-thaw cycles.
Instruction	

TARGET INFORMATION

Gene ID	54962
Gene Symbol	TIPIN
Uniprot ID	TIPIN_HUMAN
Immunogen	Synthetic peptide taken within amino acid region 240-270 on mouse TIPIN protein.
Immunogen Region	240-270
Specificity	
Immunogen Sequence	



Immunohistochemistry of rat Ovary with Anti-TIPIN primary antibody (STJ503263) at 1:100 dilution in Buffer. Section was treated with DAB and Haematoxylin stain. Magnification is at 40X.