

## Anti-TIA1 antibody (50-100) (STJ503251)

STJ503251

### GENERAL INFORMATION

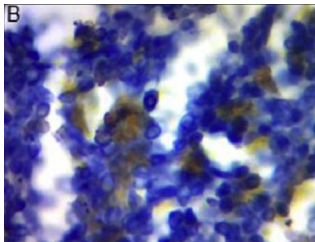
|                          |  |
|--------------------------|--|
| <b>Product Type</b>      | Primary antibodies   |
| <b>Short Description</b> | Rabbit polyclonal antibody anti-TIA1 (50-100) is suitable for use in Confocal Microscopy, ELISA, Immunocytochemistry, Immunofluorescence, Immunohistochemistry and Western Blot research applications. |
| <b>Applications</b>      | CM, ELISA, ICC, IF, IHC, WB  |
| <b>Host/Source</b>       | Rabbit   |
| <b>Reactivity</b>        | Human, Mouse, Rat  |

### PRODUCT PROPERTIES

|                            |   |
|----------------------------|---|
| <b>Clonality</b>           | Polyclonal  |
| <b>Clone ID</b>            |   |
| <b>Concentration</b>       | 0.55-0.75 µg/µl   |
| <b>Conjugation</b>         | Unconjugated  |
| <b>Purification</b>        | Affinity Purified   |
| <b>Dilution Range</b>      | WB: 1:500<br>DB: 1:10, 000<br>ELISA: 1:10, 000<br>IHC: 1:50<br>ICC: 1:50<br>IF: 1:50<br>CFM: 1:50 |
| <b>Formulation</b>         |   |
| <b>Isotype</b>             | IgG   |
| <b>Storage Instruction</b> | Store at -20°C for long term storage. Avoid freeze-thaw cycles.                                   |

### TARGET INFORMATION

|                           |  |
|---------------------------|--|
| <b>Gene ID</b>            | 7072   |
| <b>Gene Symbol</b>        | TIA1   |
| <b>Uniprot ID</b>         | TIA1_HUMAN   |
| <b>Immunogen</b>          | Synthetic peptide taken within amino acid region 50-100 on human TIA1 protein. |
| <b>Immunogen Region</b>   | 50-100   |
| <b>Specificity</b>        |  |
| <b>Immunogen Sequence</b> |  |



Immunohistochemistry spleen with Anti-TIA1 Antibody (STJ503251) at 1:50 dilution in Buffer.