

Anti-TDP2 antibody (330-360) (STJ503221)

STJ503221

GENERAL INFORMATION

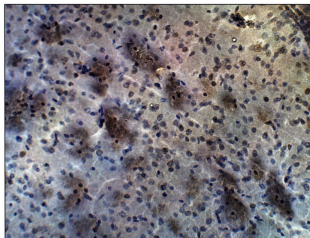
Product Type	Primary antibodies
Short Description	Rabbit polyclonal antibody anti-TDP2 (330-360) is suitable for use in ELISA, Immunohistochemistry, Immunoprecipitation and Western Blot research applications.
Applications	ELISA, IHC, IP, WB
Host/Source	Rabbit
Reactivity	Human, Mouse, Rat

PRODUCT PROPERTIES

Clonality	Polyclonal
Clone ID	
Concentration	0.58 µg/µl
Conjugation	Unconjugated
Purification	Affinity Purified
Dilution Range	WB: 1:1, 000 DB: 1:10, 000 ELISA: 1:10, 000 IP: 1:200 IHC: 1:50-1:150
Formulation	
Isotype	IgG
Storage	Store at -20°C for long term storage. Avoid freeze-thaw cycles.
Instruction	

TARGET INFORMATION

Gene ID	51567
Gene Symbol	TDP2
Uniprot ID	TYDP2_HUMAN
Immunogen	Synthetic peptide taken within amino acid region 330-360 on human Tyrosyl-DNA phosphodiesterase protein.
Immunogen Region	330-360
Specificity	
Immunogen Sequence	



Immunohistochemistry of mouse brain with Anti-TDP2 primary antibody (STJ503221) at 1:100 dilution in buffer. Section was treated with DAB and Haematoxylin stain. Magnification is at 20x.