

Anti-SDC1 antibody (1-100) (STJ503191)

STJ503191

GENERAL INFORMATION

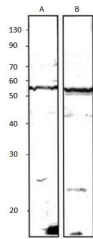
| | |
|--------------------------|---|
| Product Type | Primary antibodies |
| Short Description | Rabbit polyclonal antibody anti-SDC1 (1-100) is suitable for use in ELISA and Western Blot research applications. |
| Applications | ELISA, WB |
| Host/Source | Rabbit |
| Reactivity | Human, Mouse, Rat |

PRODUCT PROPERTIES

| | |
|----------------------------|---|
| Clonality | Polyclonal |
| Clone ID | |
| Concentration | 0.55-0.61 µg/µl |
| Conjugation | Unconjugated |
| Purification | Affinity Purified |
| Dilution Range | WB: 1:500 DB: 1:10, 000 ELISA: 1:10, 000 |
| Formulation | |
| Isotype | IgG |
| Storage Instruction | Store at -20°C for long term storage. Avoid freeze-thaw cycles. |

TARGET INFORMATION

| | |
|---------------------------|---|
| Gene ID | 6382 |
| Gene Symbol | SDC1 |
| Uniprot ID | SDC1_HUMAN |
| Immunogen | N-epitope synthetic peptide taken within amino acid region 1-100 on human Syndecan-1 protein. |
| Immunogen Region | 1-100 |
| Specificity | |
| Immunogen Sequence | |



Western blot with Anti-SDC1 Antibody (STJ503191) with SYND1 peptide (A) on T47D cells (B). Antibody at 1:500 dilution in buffer.