

Anti-SYDE1 antibody (680-735) (STJ503179)

STJ503179

GENERAL INFORMATION

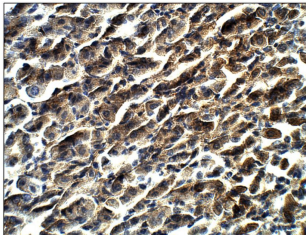
Product Type	Primary antibodies
Short Description	Rabbit polyclonal antibody anti-SYDE1 (680-735) is suitable for use in ELISA and Western Blot research applications.
Applications	ELISA, WB
Host/Source	Rabbit
Reactivity	C.elegans, Human, Mouse

PRODUCT PROPERTIES

Clonality	Polyclonal
Clone ID	
Concentration	0.67-0.68 µg/µl
Conjugation	Unconjugated
Purification	Affinity Purified
Dilution Range	WB: 1:500 ELISA: 1:10, 000 IP: 1:200 IHC: 1:50-1:150
Formulation	
Isotype	IgG
Storage Instruction	Store at -20°C for long term storage. Avoid freeze-thaw cycles.

TARGET INFORMATION

Gene ID	85360
Gene Symbol	SYDE1
Uniprot ID	SYDE1_HUMAN
Immunogen	Synthetic peptide taken within amino acid region 680-735 on human SYDE1 protein.
Immunogen Region	680-735
Specificity	
Immunogen Sequence	



Immunohistochemistry of mouse tissue with Anti-SYDE1 primary antibody (STJ503179) at 1:50 dilution in Buffer. Section was treated with DAB and Haematoxylin stain.

This product is suitable for in-vitro studies under the RESEARCH USE ONLY [RUO] licence. This product must not be used as for diagnostic or other medical purposes.
St John's Laboratory Ltd, Knowledge Dock Business Centre, University Way, London, E16 2RD | Tel: 0208 223 3081