

Anti-SUR1 antibody (1560-1582) (STJ503161)

STJ503161

GENERAL INFORMATION

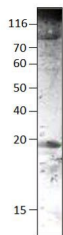
Product Type	Primary antibodies
Short Description	Rabbit polyclonal antibody anti-SUR1 (1560-1582) is suitable for use in ELISA and Western Blot research applications.
Applications	ELISA, WB
Host/Source	Rabbit
Reactivity	Human

PRODUCT PROPERTIES

Clonality	Polyclonal
Clone ID	
Concentration	0.6 µg/µl
Conjugation	Unconjugated
Purification	Affinity Purified
Dilution Range	WB: 1:500 DB: 1:10, 000-1:100, 000 ELISA: 1:10, 000-1:100, 000 IHC: 1:200
Formulation	
Isotype	IgG
Storage Instruction	Store at -20°C for long term storage. Avoid freeze-thaw cycles.

TARGET INFORMATION

Gene ID	25559
Gene Symbol	Abcc8
Uniprot ID	ABCC8_RAT
Immunogen	Synthetic peptide corresponding to positions 1560-1582.
Immunogen Region	1560-1582
Specificity	
Immunogen Sequence	



Western blot with Anti-SUR1 Antibody (STJ503161) with SUR1 peptide. Antibody at 1:1000 dilution in buffer.

This product is suitable for in-vitro studies under the RESEARCH USE ONLY [RUO] licence. This product must not be used as for diagnostic or other medical purposes.
St John's Laboratory Ltd, Knowledge Dock Business Centre, University Way, London, E16 2RD | Tel: 0208 223 3081