

Anti-STIM2 antibody (600-650) (STJ503143)

STJ503143

GENERAL INFORMATION

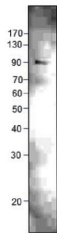
Product Type	Primary antibodies
Short Description	Rabbit polyclonal antibody anti-STIM2 (600-650) is suitable for use in ELISA and Western Blot research applications.
Applications	ELISA, WB
Host/Source	Rabbit
Reactivity	Human, Mouse, Rat

PRODUCT PROPERTIES

Clonality	Polyclonal
Clone ID	
Concentration	0.51-0.58 µg/µl
Conjugation	Unconjugated
Purification	Affinity Purified
Dilution Range	WB: 1:500 DB: 1:10, 000 ELISA: 1:10, 000
Formulation	
Isotype	IgG
Storage Instruction	Store at -20°C for long term storage. Avoid freeze-thaw cycles.

TARGET INFORMATION

Gene ID	57620
Gene Symbol	STIM2
Uniprot ID	STIM2_HUMAN
Immunogen	Synthetic peptide taken within amino acid region 600-650 on human STIM2 protein.
Immunogen Region	600-650
Specificity	
Immunogen Sequence	



Western blot with Anti-STIM2 Antibody (STJ503143) on rat muscle. Antibody at 1:500 dilution in buffer.