

Anti-STAT3 antibody (700-750) (STJ503137)

STJ503137

GENERAL INFORMATION

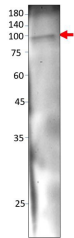
Product Type	Primary antibodies
Short Description	Rabbit polyclonal antibody anti-STAT3 (700-750) is suitable for use in ELISA, Immunoprecipitation and Western Blot research applications.
Applications	ELISA, IP, WB
Host/Source	Rabbit
Reactivity	Human, Mouse, Rat

PRODUCT PROPERTIES

Clonality	Polyclonal
Clone ID	
Concentration	0.55-0.75 µg/µl
Conjugation	Unconjugated
Purification	Affinity Purified
Dilution Range	WB: 1:500 ELISA: 1:10, 000 IP: 1:200
Formulation	
Isotype	IgG
Storage Instruction	Store at -20°C for long term storage. Avoid freeze-thaw cycles.

TARGET INFORMATION

Gene ID	6774
Gene Symbol	STAT3
Uniprot ID	STAT3_HUMAN
Immunogen	Synthetic peptide taken within amino acid region 700-750 on human STAT3 protein.
Immunogen Region	700-750
Specificity	
Immunogen Sequence	



Western blot with Anti-STAT3 Antibody (STJ503137) on recombinant STAT3 protein. Antibody at 1:1500 dilution in buffer.