

Anti-SRPX2 antibody (430-470) (STJ503134)

STJ503134

GENERAL INFORMATION

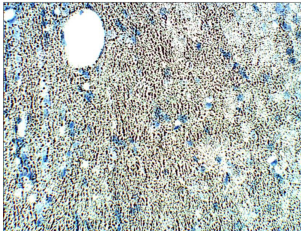
Product Type	Primary antibodies
Short Description	Rabbit polyclonal antibody anti-SRPX2 (430-470) is suitable for use in ELISA, Immunohistochemistry, Immunoprecipitation and Western Blot research applications.
Applications	ELISA, IHC, IP, WB
Host/Source	Rabbit
Reactivity	Human, Mouse, Rat

PRODUCT PROPERTIES

Clonality	Polyclonal
Clone ID	
Concentration	0.55-0.75 µg/µl
Conjugation	Unconjugated
Purification	Affinity Purified
Dilution Range	WB: 1:500 DB: 1:10, 000 ELISA: 1:10, 000 IP: 1:100 IHC: 1:200
Formulation	
Isotype	IgG
Storage	Store at -20°C for long term storage. Avoid freeze-thaw cycles.
Instruction	

TARGET INFORMATION

Gene ID	27286
Gene Symbol	SRPX2
Uniprot ID	SRPX2_HUMAN
Immunogen	Synthetic peptide taken within amino acid region 430-470 on human SRPX2 protein.
Immunogen Region	430-470
Specificity	
Immunogen Sequence	



Immunohistochemistry of rat brain with Anti-SRPX2 primary antibody (STJ503134) at 1:100 dilution in Buffer. Section was treated with DAB and Haematoxylin stain.