

## Anti-SERPINB5 antibody (310-360) (STJ503111)

STJ503111

### GENERAL INFORMATION

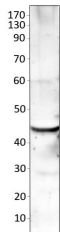
<b>Product Type</b>	Primary antibodies
<b>Short Description</b>	Rabbit polyclonal antibody anti-SERPINB5 (310-360) is suitable for use in Confocal Microscopy, ELISA, Immunocytochemistry, Immunofluorescence, Immunohistochemistry, Immunoprecipitation and Western Blot research applications.
<b>Applications</b>	CM, ELISA, ICC, IF, IHC, IP, WB
<b>Host/Source</b>	Rabbit
<b>Reactivity</b>	Human, Mouse, Rat

### PRODUCT PROPERTIES

<b>Clonality</b>	Polyclonal
<b>Clone ID</b>	
<b>Concentration</b>	0.50 µg/µl
<b>Conjugation</b>	Unconjugated
<b>Purification</b>	Affinity Purified
<b>Dilution Range</b>	WB: 1:500 DB: 1:10, 000 ELISA: 1:10, 000 IP: 1:150 IHC: 1:50-1:150 IF: 1:200
<b>Formulation</b>	
<b>Isotype</b>	IgG
<b>Storage Instruction</b>	Store at -20°C for long term storage. Avoid freeze-thaw cycles.

### TARGET INFORMATION

<b>Gene ID</b>	5268
<b>Gene Symbol</b>	SERPINB5
<b>Uniprot ID</b>	SPB5_HUMAN
<b>Immunogen</b>	Synthetic peptide taken within amino acid region 310-360 on human MASPIN protein.
<b>Immunogen Region</b>	310-360
<b>Specificity</b>	
<b>Immunogen Sequence</b>	



Western blot with Anti-SERPINB5 Antibody (STJ503111) on mouse heart. Antibody at 1:500 dilution in buffer.