

Anti-SIDT1 antibody (390-430) (STJ503023)

STJ503023

GENERAL INFORMATION

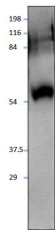
Product Type	Primary antibodies
Short Description	Rabbit polyclonal antibody anti-SIDT1 (390-430) is suitable for use in ELISA and Western Blot research applications.
Applications	ELISA, WB
Host/Source	Rabbit
Reactivity	Mouse, Rat

PRODUCT PROPERTIES

Clonality	Polyclonal
Clone ID	
Concentration	0.61-0.63 µg/µl
Conjugation	Unconjugated
Purification	Affinity Purified
Dilution Range	WB: 1:500 DB: 1:10, 000 ELISA: 1:10, 000
Formulation	
Isotype	IgG
Storage Instruction	Store at -20°C for long term storage. Avoid freeze-thaw cycles.

TARGET INFORMATION

Gene ID	54847
Gene Symbol	SIDT1
Uniprot ID	SIDT1_HUMAN
Immunogen	Synthetic peptide taken within amino acid region 390-430 on human SIDT1 protein.
Immunogen Region	390-430
Specificity	
Immunogen Sequence	



Western blot with Anti-SIDT1 Antibody (STJ503023) with SIDT1 peptide. Antibody at 1:500 dilution in buffer.