

Anti-SLC5A2 antibody (580-630) (STJ502993)

STJ502993

GENERAL INFORMATION

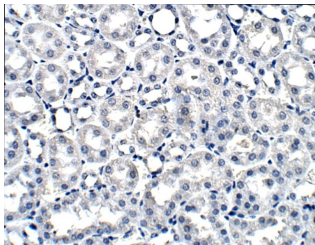
Product Type	Primary antibodies
Short Description	Rabbit polyclonal antibody anti-SLC5A2 (580-630) is suitable for use in Confocal Microscopy, ELISA, Immunocytochemistry, Immunofluorescence, Immunohistochemistry, Immunoprecipitation and Western Blot research applications.
Applications	CM, ELISA, ICC, IF, IHC, IP, WB
Host/Source	Rabbit
Reactivity	Human, Monkey, Mouse

PRODUCT PROPERTIES

Clonality	Polyclonal
Clone ID	
Concentration	0.65 µg/µl
Conjugation	Unconjugated
Purification	Affinity Purified
Dilution Range	WB: 1:500 DB: 1:10, 000 ELISA: 1:10, 000 IP: 1:150 IHC: 1:50 ICC: 1:50 IF: 1:50 CFM: 1:50
Formulation	
Isotype	IgG
Storage	Store at -20°C for long term storage. Avoid freeze-thaw cycles.
Instruction	

TARGET INFORMATION

Gene ID	6524
Gene Symbol	SLC5A2
Uniprot ID	SC5A2_HUMAN
Immunogen	Synthetic peptide taken within amino acid region 580-630 on human SGLT2 protein.
Immunogen Region	580-630
Specificity	
Immunogen Sequence	



Immunohistochemistry of mouse kidney with Anti-SLC5A2 primary antibody (STJ502993) at 1:50 dilution in Buffer. Section was treated with DAB and Haematoxylin stain.

This product is suitable for in-vitro studies under the RESEARCH USE ONLY [RUO] licence. This product must not be used as for diagnostic or other medical purposes.
St John's Laboratory Ltd, Knowledge Dock Business Centre, University Way, London, E16 2RD | Tel: 0208 223 3081