

## Anti-SLC5A1 antibody (402-422) (STJ502987)

STJ502987

### GENERAL INFORMATION

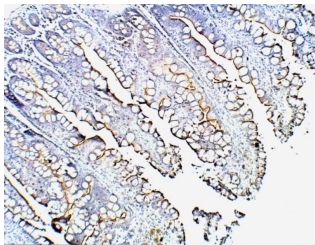
<b>Product Type</b>	Primary antibodies
<b>Short Description</b>	Rabbit polyclonal antibody anti-SLC5A1 (402-422) is suitable for use in Confocal Microscopy, ELISA, Immunocytochemistry, Immunofluorescence, Immunohistochemistry, Immunoprecipitation and Western Blot research applications.
<b>Applications</b>	CM, ELISA, ICC, IF, IHC, IP, WB
<b>Host/Source</b>	Rabbit
<b>Reactivity</b>	Human

### PRODUCT PROPERTIES

<b>Clonality</b>	Polyclonal
<b>Clone ID</b>	
<b>Concentration</b>	0.6 µg/µl
<b>Conjugation</b>	Unconjugated
<b>Purification</b>	Affinity Purified
<b>Dilution Range</b>	WB: 1:500-1:1,000 DB: 1:4,000 ELISA: 1:4,000 IP: 1:200 IHC: 1:250 ICC: 1:250 IF: 1:250 CFM: 1:250
<b>Formulation</b>	
<b>Isotype</b>	IgG
<b>Storage</b>	Store at -20°C for long term storage. Avoid freeze-thaw cycles.
<b>Instruction</b>	

### TARGET INFORMATION

<b>Gene ID</b>	6523
<b>Gene Symbol</b>	SLC5A1
<b>Uniprot ID</b>	SC5A1_HUMAN
<b>Immunogen</b>	Synthetic peptide corresponding to amino acids 402-422 of Human SGLT1.
<b>Immunogen Region</b>	402-422
<b>Specificity</b>	
<b>Immunogen Sequence</b>	



Immunohistochemistry of baboon small intestine with Anti-SLC5A1 primary antibody (STJ502987) at 1:50 dilution in Buffer. Section was treated with DAB and Haematoxylin stain. Magnification is at 10X.