

## Anti-Soluble Guanylyl Cyclase beta 1 antibody (175-225) (STJ502975)

STJ502975

### GENERAL INFORMATION

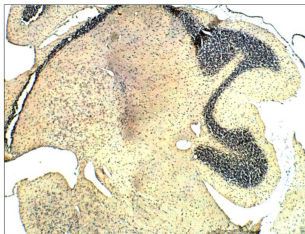
<b>Product Type</b>	Primary antibodies
<b>Short Description</b>	Rabbit polyclonal antibody anti-Soluble Guanylyl Cyclase beta 1 (175-225) is suitable for use in Confocal Microscopy, ELISA, Immunocytochemistry, Immunofluorescence, Immunohistochemistry, Immunoprecipitation and Western Blot research applications.
<b>Applications</b>	CM, ELISA, ICC, IF, IHC, IP, WB
<b>Host/Source</b>	Rabbit
<b>Reactivity</b>	Bovine, Human, Mouse, Pig, Rat

### PRODUCT PROPERTIES

<b>Clonality</b>	Polyclonal
<b>Clone ID</b>	
<b>Concentration</b>	0.75-1.2 µg/µl
<b>Conjugation</b>	Unconjugated
<b>Purification</b>	Affinity Purified
<b>Dilution Range</b>	WB: 1:500 DB: 1:10, 000 ELISA: 1:10, 000 IP: 1:200 IHC: 1:100 ICC: 1:100 IF: 1:100 CFM: 1:100
<b>Formulation</b>	
<b>Isotype</b>	IgG
<b>Storage</b>	Store at -20°C for long term storage. Avoid freeze-thaw cycles.
<b>Instruction</b>	

### TARGET INFORMATION

<b>Gene ID</b>	<a href="#">25202</a>
<b>Gene Symbol</b>	<a href="#">Gucy1b1</a>
<b>Uniprot ID</b>	<a href="#">GUCYB1_RAT</a>
<b>Immunogen</b>	Synthetic peptide taken within amino acid region 175-225 on rat guanylate cyclase soluble subunit beta-1 protein.
<b>Immunogen Region</b>	175-225
<b>Specificity</b>	
<b>Immunogen Sequence</b>	



Immunohistochemistry of rat tissue with Anti-Soluble Guanylyl Cyclase beta 1 primary antibody (STJ502975) at 1:100 dilution in Buffer. Section was treated with DAB and Haematoxylin stain. Magnification is at 5X.