

## Anti-SFRP2 antibody (225-295) (STJ502963)

STJ502963

### GENERAL INFORMATION

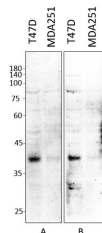
<b>Product Type</b>	Primary antibodies
<b>Short Description</b>	Rabbit polyclonal antibody anti-SFRP2 (225-295) is suitable for use in ELISA, Immunoprecipitation and Western Blot research applications.
<b>Applications</b>	ELISA, IP, WB
<b>Host/Source</b>	Rabbit
<b>Reactivity</b>	Human, Mouse, Rat

### PRODUCT PROPERTIES

<b>Clonality</b>	Polyclonal
<b>Clone ID</b>	
<b>Concentration</b>	0.64-0.72 µg/µl
<b>Conjugation</b>	Unconjugated
<b>Purification</b>	Affinity Purified
<b>Dilution Range</b>	WB: 1:500 DB: 1:10, 000 ELISA: 1:10, 000 IP: 1:200
<b>Formulation</b>	
<b>Isotype</b>	IgG
<b>Storage Instruction</b>	Store at -20°C for long term storage. Avoid freeze-thaw cycles.

### TARGET INFORMATION

<b>Gene ID</b>	6423
<b>Gene Symbol</b>	SFRP2
<b>Uniprot ID</b>	SFRP2_HUMAN
<b>Immunogen</b>	Synthetic peptide taken within amino acid region 225-295 on human SFRP2.
<b>Immunogen Region</b>	225-295
<b>Specificity</b>	
<b>Immunogen Sequence</b>	



Western blot with Anti-SFRP2 Antibody (STJ502963) on T47D cells and MDA251. Antibody at 1:500 dilution in buffer.