

Anti-SFN antibody (150-220) (STJ502960)

STJ502960

GENERAL INFORMATION

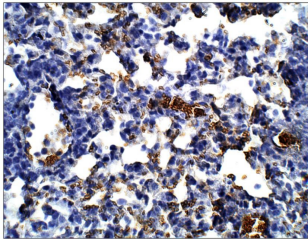
| | |
|--------------------------|---|
| Product Type | Primary antibodies |
| Short Description | Rabbit polyclonal antibody anti-SFN (150-220) is suitable for use in ELISA, Immunoprecipitation and Western Blot research applications. |
| Applications | ELISA, IP, WB |
| Host/Source | Rabbit |
| Reactivity | Human, Mouse, Rat |

PRODUCT PROPERTIES

| | |
|----------------------------|---|
| Clonality | Polyclonal |
| Clone ID | |
| Concentration | 0.5-1.5 µg/µl |
| Conjugation | Unconjugated |
| Purification | Affinity Purified |
| Dilution Range | WB: 1:2, 500-1:5, 000 ELISA: 1:50, 000 IP: 1:200 IHC: 1:50-1:200 |
| Formulation | |
| Isotype | IgG |
| Storage Instruction | Store at -20°C for long term storage. Avoid freeze-thaw cycles. |

TARGET INFORMATION

| | |
|---------------------------|---|
| Gene ID | 2810 |
| Gene Symbol | SFN |
| Uniprot ID | 1433S_HUMAN |
| Immunogen | Synthetic peptide taken within amino acid region 150-220 on human 14-3-3 protein sigma/STRATIFIN/SFN protein. |
| Immunogen Region | 150-220 |
| Specificity | |
| Immunogen Sequence | |



Immunohistochemistry of mouse lung with Anti-SFN primary antibody (STJ502960) at 1:50 dilution in Buffer. Section was treated with DAB and Haematoxylin stain. Magnification is at 40X.