

Anti-SERINC4 antibody (350-400) (STJ502936)

STJ502936

GENERAL INFORMATION

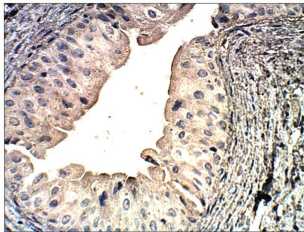
Product Type	Primary antibodies
Short Description	Rabbit polyclonal antibody anti-SERINC4 (350-400) is suitable for use in ELISA, Immunohistochemistry, Immunoprecipitation and Western Blot research applications.
Applications	ELISA, IHC, IP, WB
Host/Source	Rabbit
Reactivity	Human, Monkey

PRODUCT PROPERTIES

Clonality	Polyclonal
Clone ID	
Concentration	0.5 µg/µl
Conjugation	Unconjugated
Purification	Affinity Purified
Dilution Range	WB: 1:500 ELISA: 1:10,000 IP: 1:200 IHC: 1:100
Formulation	
Isotype	IgG
Storage Instruction	Store at -20°C for long term storage. Avoid freeze-thaw cycles.

TARGET INFORMATION

Gene ID	619189
Gene Symbol	SERINC4
Uniprot ID	SERC4_HUMAN
Immunogen	Synthetic peptide taken within amino acid region 350-400 on human Serine incorporator 4 protein.
Immunogen Region	350-400
Specificity	
Immunogen Sequence	



Immunohistochemistry of baboon Bladder with Anti-SERINC4 primary antibody (STJ502936) at 1:100 dilution in Buffer. Section was treated with DAB and Haematoxylin stain. Magnification is at 40X.