

Anti-SERINC1 antibody (250-310) (STJ502933)

STJ502933

GENERAL INFORMATION

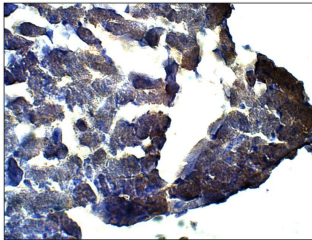
Product Type	Primary antibodies
Short Description	Rabbit polyclonal antibody anti-SERINC1 (250-310) is suitable for use in ELISA, Immunoprecipitation and Western Blot research applications.
Applications	ELISA, IP, WB
Host/Source	Rabbit
Reactivity	Human, Mouse, Pig, Rat

PRODUCT PROPERTIES

Clonality	Polyclonal
Clone ID	
Concentration	0.5 µg/µl
Conjugation	Unconjugated
Purification	Affinity Purified
Dilution Range	WB: 1:500 ELISA: 1:10, 000 IP: 1:200
Formulation	
Isotype	IgG
Storage Instruction	Store at -20°C for long term storage. Avoid freeze-thaw cycles.

TARGET INFORMATION

Gene ID	57515
Gene Symbol	SERINC1
Uniprot ID	SERC1_HUMAN
Immunogen	Synthetic peptide taken within amino acid region 250-310 on human Serine incorporator 1 protein.
Immunogen Region	250-310
Specificity	
Immunogen Sequence	



Immunohistochemistry of mouse tissue with Anti-SERINC1 primary antibody (STJ502933) at 1:50 dilution in Buffer. Section was treated with DAB and Haematoxylin stain. Magnification is at 40X.