

## Anti-SEPT8 antibody (1-50) (STJ502913)

STJ502913

### GENERAL INFORMATION

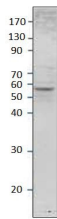
<b>Product Type</b>	Primary antibodies
<b>Short Description</b>	Rabbit polyclonal antibody anti-SEPT8 (1-50) is suitable for use in ELISA and Western Blot research applications.
<b>Applications</b>	ELISA, WB
<b>Host/Source</b>	Rabbit
<b>Reactivity</b>	Human, Mouse, Rat

### PRODUCT PROPERTIES

<b>Clonality</b>	Polyclonal
<b>Clone ID</b>	
<b>Concentration</b>	0.64-0.72 µg/µl
<b>Conjugation</b>	Unconjugated
<b>Purification</b>	Affinity Purified
<b>Dilution Range</b>	WB: 1:500 DB: 1:10, 000 ELISA: 1:10, 000
<b>Formulation</b>	
<b>Isotype</b>	IgG
<b>Storage Instruction</b>	Store at -20°C for long term storage. Avoid freeze-thaw cycles.

### TARGET INFORMATION

<b>Gene ID</b>	20362
<b>Gene Symbol</b>	Septin8
<b>Uniprot ID</b>	SEPT8_MOUSE
<b>Immunogen</b>	Synthetic peptide taken within amino acid region 1-50 on SEPT8 protein.
<b>Immunogen Region</b>	1-50
<b>Specificity</b>	
<b>Immunogen Sequence</b>	



Western blot with Anti-Septin 8 Antibody (STJ502913) with SEPT8 peptide. Antibody at 1:500 dilution in buffer.