

## Anti-SEC24B antibody (390-430) (STJ502897)

STJ502897

### GENERAL INFORMATION

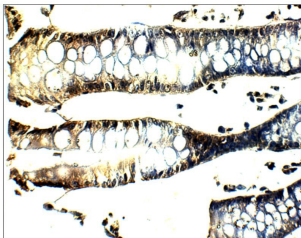
|                          |  |
|--------------------------|--|
| <b>Product Type</b>      | Primary antibodies   |
| <b>Short Description</b> | Rabbit polyclonal antibody anti-SEC24B (390-430) is suitable for use in Confocal Microscopy, ELISA, Immunocytochemistry, Immunohistochemistry, Immunofluorescence, Immunoprecipitation and Western Blot research applications. |
| <b>Applications</b>      | CM, ELISA, ICC, IHC, IF, IP, WB  |
| <b>Host/Source</b>       | Rabbit   |
| <b>Reactivity</b>        | Monkey, Mouse, Rat   |

### PRODUCT PROPERTIES

|                       |  |
|-----------------------|--|
| <b>Clonality</b>      | Polyclonal   |
| <b>Clone ID</b>       |  |
| <b>Concentration</b>  | 0.55-0.59 µg/µl  |
| <b>Conjugation</b>    | Unconjugated   |
| <b>Purification</b>   | Affinity Purified  |
| <b>Dilution Range</b> | WB: 1:500<br>DB: 1:10, 000<br>ELISA: 1:10, 000<br>IP: 1:200<br>IHC: 1:200<br>ICC: 1:200<br>IF: 1:200<br>CFM: 1:200 |
| <b>Formulation</b>    |  |
| <b>Isotype</b>        | IgG  |
| <b>Storage</b>        | Store at -20°C for long term storage. Avoid freeze-thaw cycles.  |
| <b>Instruction</b>    |  |

### TARGET INFORMATION

|                           |   |
|---------------------------|---|
| <b>Gene ID</b>            |   |
| <b>Gene Symbol</b>        |   |
| <b>Uniprot ID</b>         |   |
| <b>Immunogen</b>          | Synthetic peptide taken within amino acid region 390-430 on Sec24B protein. |
| <b>Immunogen Region</b>   | 390-430   |
| <b>Specificity</b>        |   |
| <b>Immunogen Sequence</b> |   |



Immunohistochemistry of baboon Colon with Anti-SEC24B primary antibody (STJ502897) at 1:100 dilution in Buffer. Section was treated with DAB and Haematoxylin stain. Magnification is at 40X.