

Anti-Adenylylate Cyclase 10 antibody (200-250) (STJ502867)

STJ502867

GENERAL INFORMATION

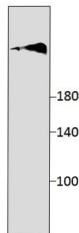
Product Type	Primary antibodies
Short Description	Rabbit polyclonal antibody anti-Adenylylate Cyclase 10 (200-250) is suitable for use in ELISA, Immunoprecipitation and Western Blot research applications.
Applications	ELISA, IP, WB
Host/Source	Rabbit
Reactivity	Gorilla, Human, Mouse

PRODUCT PROPERTIES

Clonality	Polyclonal
Clone ID	
Concentration	0.55-0.75 µg/µl
Conjugation	Unconjugated
Purification	Affinity Purified
Dilution Range	WB: 1:500 DB: 1:10, 000 ELISA: 1:10, 000 IP: 1:150
Formulation	
Isotype	IgG
Storage	Store at -20°C for long term storage. Avoid freeze-thaw cycles.
Instruction	

TARGET INFORMATION

Gene ID	271639
Gene Symbol	Adcy10
Uniprot ID	ADCYA_MOUSE
Immunogen	Synthetic peptide taken within amino acid region 200-250 on mouse Adenylylate Cyclase type 10 protein.
Immunogen Region	200-250
Specificity	
Immunogen Sequence	



Western blot with Anti-Adenylylate Cyclase 10 Antibody (STJ502867) on rat heart. Antibody at 1:150 dilution in buffer.