

Anti-EDG8 antibody (380-400) (STJ502855)

STJ502855

GENERAL INFORMATION

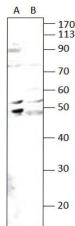
Product Type	Primary antibodies
Short Description	Rabbit polyclonal antibody anti-EDG8 (380-400) is suitable for use in ELISA and Western Blot research applications.
Applications	ELISA, WB
Host/Source	Rabbit
Reactivity	Human, Mouse, Rat

PRODUCT PROPERTIES

Clonality	Polyclonal
Clone ID	
Concentration	0.52-0.63 µg/µl
Conjugation	Unconjugated
Purification	Affinity Purified
Dilution	WB: 1:500
Range	DB: 1:10, 000 ELISA: 1:10, 000
Formulation	
Isotype	IgG
Storage Instruction	Store at -20°C for long term storage. Avoid freeze-thaw cycles.

TARGET INFORMATION

Gene ID	60399
Gene Symbol	S1pr5
Uniprot ID	S1PR5_RAT
Immunogen	Synthetic peptide taken within amino acid region 380-400 of rat S1P5R/EDG8 protein.
Immunogen Region	380-400
Specificity	Does not cross react to other Spingosine 1-phosphate receptor subtypes. Labels a strong band of EDG8 of 48-50 kDa. Also labels a 54 kDa band, the identity of this is not known but may represent phosphorylated EDG8.
Immunogen Sequence	



Western blot with Anti-EDG8 Antibody (STJ502855) with S1P5R (A) and T47D cells (B). Antibody at 1:500 dilution in buffer.

This product is suitable for in-vitro studies under the RESEARCH USE ONLY [RUO] licence. This product must not be used as for diagnostic or other medical purposes.
St John's Laboratory Ltd, Knowledge Dock Business Centre, University Way, London, E16 2RD | Tel: 0208 223 3081