

Anti-S100P antibody (Full Length) (STJ502846)

STJ502846

GENERAL INFORMATION

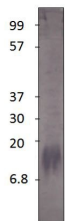
Product Type	Primary antibodies
Short Description	Rabbit polyclonal antibody anti-S100P (Full Length) is suitable for use in Confocal Microscopy, ELISA, Immunocytochemistry, Immunofluorescence, Immunohistochemistry, Immunoprecipitation and Western Blot research applications.
Applications	CM, ELISA, ICC, IF, IHC, IP, WB
Host/Source	Rabbit
Reactivity	Human, Mouse

PRODUCT PROPERTIES

Clonality	Polyclonal
Clone ID	
Concentration	0.65 µg/µl
Conjugation	Unconjugated
Purification	Affinity Purified
Dilution Range	WB: 1:500 DB: 1:10, 000 ELISA: 1:10, 000
Formulation	
Isotype	IgG
Storage Instruction	Store at -20°C for long term storage. Avoid freeze-thaw cycles.

TARGET INFORMATION

Gene ID	6286
Gene Symbol	S100P
Uniprot ID	S100P_HUMAN
Immunogen	Full length protein of human S100 beta/beta homodimer.
Immunogen Region	Full Length
Specificity	
Immunogen Sequence	



Western blot with Anti-S100P Antibody (STJ502846) with S100B peptide. Antibody at 1:500 dilution in buffer. 15% discontinuous gel.