

Anti-RUNX1 antibody (1-80) (STJ502834)

STJ502834

GENERAL INFORMATION

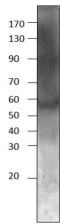
Product Type	Primary antibodies
Short Description	Rabbit polyclonal antibody anti-RUNX1 (1-80) is suitable for use in ELISA and Western Blot research applications.
Applications	ELISA, WB
Host/Source	Rabbit
Reactivity	Bovine, Human, Monkey

PRODUCT PROPERTIES

Clonality	Polyclonal
Clone ID	
Concentration	0.51-0.53 µg/µl
Conjugation	Unconjugated
Purification	Affinity Purified
Dilution Range	WB: 1:500 DB: 1:10, 000 ELISA: 1:10, 000
Formulation	
Isotype	IgG
Storage Instruction	Store at -20°C for long term storage. Avoid freeze-thaw cycles.

TARGET INFORMATION

Gene ID	861
Gene Symbol	RUNX1
Uniprot ID	RUNX1_HUMAN
Immunogen	Synthetic peptide taken within amino acid region 1-80 on human RUNX1 protein.
Immunogen Region	1-80
Specificity	
Immunogen Sequence	



Western blot with Anti-RUNX1 Antibody (STJ502834) with RUNX1 peptide. Antibody at 1:500 dilution in buffer.

This product is suitable for in-vitro studies under the RESEARCH USE ONLY [RUO] licence. This product must not be used as for diagnostic or other medical purposes.
St John's Laboratory Ltd, Knowledge Dock Business Centre, University Way, London, E16 2RD | Tel: 0208 223 3081