

Anti-ROCK2 antibody (1300-1388) (STJ502822)

STJ502822

GENERAL INFORMATION

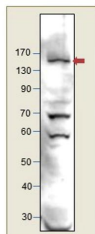
Product Type	Primary antibodies
Short Description	Rabbit polyclonal antibody anti-ROCK2 (1300-1388) is suitable for use in ELISA, Immunohistochemistry, Immunoprecipitation and Western Blot research applications.
Applications	ELISA, IHC, IP, WB
Host/Source	Rabbit
Reactivity	Human, Mouse, Rat

PRODUCT PROPERTIES

Clonality	Polyclonal
Clone ID	
Concentration	0.57 µg/µl
Conjugation	Unconjugated
Purification	Affinity Purified
Dilution Range	WB: 1:500 DB: 1:10, 000 ELISA: 1:10, 000 IP: 1:200 IHC: 1:50-1:100
Formulation	
Isotype	IgG
Storage	Store at -20°C for long term storage. Avoid freeze-thaw cycles.
Instruction	

TARGET INFORMATION

Gene ID	9475
Gene Symbol	ROCK2
Uniprot ID	ROCK2_HUMAN
Immunogen	Synthetic peptide taken within amino acid region 1300-1388 on human ROCK2 protein.
Immunogen Region	1300-1388
Specificity	
Immunogen Sequence	



Western blot with Anti-ROCK2 Antibody (STJ502822) on T47D cells. Antibody at 1:500 dilution in buffer.