

Anti-ROCK1 antibody (850-900) (STJ502819)

STJ502819

GENERAL INFORMATION

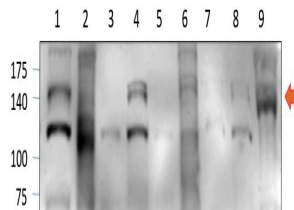
Product Type	Primary antibodies
Short Description	Rabbit polyclonal antibody anti-ROCK1 (850-900) is suitable for use in ELISA, Immunohistochemistry, Immunoprecipitation and Western Blot research applications.
Applications	ELISA, IHC, IP, WB
Host/Source	Rabbit
Reactivity	Human, Monkey, Mouse, Pig, Rat

PRODUCT PROPERTIES

Clonality	Polyclonal
Clone ID	
Concentration	0.57 µg/µl
Conjugation	Unconjugated
Purification	Affinity Purified
Dilution Range	WB: 1:500 DB: 1:10, 000 ELISA: 1:10, 000 IP: 1:200 IHC: 1:50-1:100
Formulation	
Isotype	IgG
Storage	Store at -20°C for long term storage. Avoid freeze-thaw cycles.
Instruction	

TARGET INFORMATION

Gene ID	6093
Gene Symbol	ROCK1
Uniprot ID	ROCK1_HUMAN
Immunogen	Synthetic peptide taken within amino acid region spanning 850-900 on human ROCK1 protein.
Immunogen Region	850-900
Specificity	
Immunogen Sequence	



Western blot with Anti-ROCK1 Antibody (STJ502819) on rat: 1) Ovary, 2) Heart, 3) Kidney, 4) Brain, 5) Liver, 6) Tongue, 7) Spinal Cord, 8) Cerebellum, 9) Skeletal muscle. Antibody at 1:250 dilution in buffer.

This product is suitable for in-vitro studies under the RESEARCH USE ONLY [RUO] licence. This product must not be used as for diagnostic or other medical purposes.
St John's Laboratory Ltd, Knowledge Dock Business Centre, University Way, London, E16 2RD | Tel: 0208 223 3081