

Anti-Robo3 antibody (STJ502783)

STJ502783

GENERAL INFORMATION

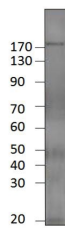
Product Type	Primary antibodies
Short Description	Rabbit polyclonal antibody anti-Robo3 is suitable for use in ELISA and Western Blot research applications.
Applications	ELISA, WB
Host/Source	Rabbit
Reactivity	Bovine, Human, Monkey, Panda

PRODUCT PROPERTIES

Clonality	Polyclonal
Clone ID	
Concentration	0.52-0.63 µg/µl
Conjugation	Unconjugated
Purification	Affinity Purified
Dilution Range	WB: 1:500 DB: 1:10, 000 ELISA: 1:10, 000
Formulation	
Isotype	IgG
Storage Instruction	Store at -20°C for long term storage. Avoid freeze-thaw cycles.

TARGET INFORMATION

Gene ID	29546
Gene Symbol	Homer1
Uniprot ID	HOME1_RAT
Immunogen	Synthetic peptide corresponding to unique amino acid sequence on human RIG1 protein.
Immunogen Region	
Specificity	
Immunogen Sequence	



Western blot with Anti-Robo3 Antibody (STJ502783) with RIG1 peptide. Antibody at 1:500 dilution in buffer.