

Anti-RCE1 antibody (300-350) (STJ502759)

STJ502759

GENERAL INFORMATION

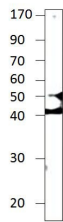
Product Type	Primary antibodies
Short Description	Rabbit polyclonal antibody anti-RCE1 (300-350) is suitable for use in ELISA and Western Blot research applications.
Applications	ELISA, WB
Host/Source	Rabbit
Reactivity	Human

PRODUCT PROPERTIES

Clonality	Polyclonal
Clone ID	
Concentration	0.65-0.75 µg/µl
Conjugation	Unconjugated
Purification	Affinity Purified
Dilution Range	WB: 1:500 DB: 1:10, 000 ELISA: 1:10, 000
Formulation	
Isotype	IgG
Storage Instruction	Store at -20°C for long term storage. Avoid freeze-thaw cycles.

TARGET INFORMATION

Gene ID	9986
Gene Symbol	RCE1
Uniprot ID	FACE2_HUMAN
Immunogen	Synthetic peptide taken within amino acid sequence 300-350 on human RCE1 protein.
Immunogen Region	300-350
Specificity	
Immunogen Sequence	



Western blot with Anti-RCE1 Antibody (STJ502759) on SKNMC cells. Antibody at 1:500 dilution in buffer.