

Anti-RASGRF2 antibody (1100-1200) (STJ502753)

STJ502753

GENERAL INFORMATION

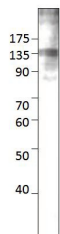
Product Type	Primary antibodies
Short Description	Rabbit polyclonal antibody anti-RASGRF2 (1100-1200) is suitable for use in ELISA, Immunohistochemistry, Immunoprecipitation and Western Blot research applications.
Applications	ELISA, IHC, IP, WB
Host/Source	Rabbit
Reactivity	Human, Mouse, Rat

PRODUCT PROPERTIES

Clonality	Polyclonal
Clone ID	
Concentration	0.58 µg/µl
Conjugation	Unconjugated
Purification	Affinity Purified
Dilution Range	WB: 1:500 DB: 1:10, 000 ELISA: 1:10, 000 IP: 1:200 IHC: 1:50-1:100
Formulation	
Isotype	IgG
Storage	Store at -20°C for long term storage. Avoid freeze-thaw cycles.
Instruction	

TARGET INFORMATION

Gene ID	5924
Gene Symbol	RASGRF2
Uniprot ID	RGRF2_HUMAN
Immunogen	Synthetic peptide taken within amino acid region 1100-1200 on human RASGRF2 protein.
Immunogen Region	1100-1200
Specificity	
Immunogen Sequence	



Western blot with Anti-RASGRF2 Antibody (STJ502753) on T47D cell. Antibody at 1:500 dilution in buffer.