

Anti-VHL antibody (130-200) (STJ502735)

STJ502735

GENERAL INFORMATION

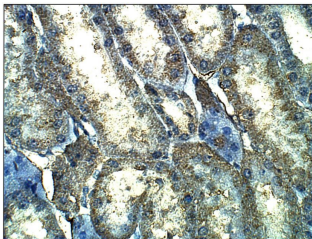
Product Type	Primary antibodies
Short Description	Rabbit polyclonal antibody anti-VHL (130-200) is suitable for use in ELISA, Immunohistochemistry, Immunoprecipitation and Western Blot research applications.
Applications	ELISA, IHC, IP, WB
Host/Source	Rabbit
Reactivity	Human, Monkey, Mouse, Rat

PRODUCT PROPERTIES

Clonality	Polyclonal
Clone ID	
Concentration	0.5-1.5 µg/µl
Conjugation	Unconjugated
Purification	Affinity Purified
Dilution Range	WB: 1:500 ELISA: 1:10, 000 IP: 1:200 IHC: 1:50-1:150 ICC: 1:50-1:150
Formulation	
Isotype	IgG
Storage	Store at -20°C for long term storage. Avoid freeze-thaw cycles.
Instruction	

TARGET INFORMATION

Gene ID	7428
Gene Symbol	VHL
Uniprot ID	VHL_HUMAN
Immunogen	Synthetic peptide taken within amino acid region 130-200 on human Von Hippel-Lindau disease tumor suppressor protein. Host Rabbit Species Cross Reactivity Human, Monkey, Mouse, Rat
Immunogen Region	130-200
Specificity	
Immunogen Sequence	



Immunohistochemistry of baboon kidney with Anti-VHL primary antibody (STJ502735) at 1:50 dilution in Buffer. Section was treated with DAB and Haematoxylin stain. Magnification is at 40X.

This product is suitable for in-vitro studies under the RESEARCH USE ONLY [RUO] licence. This product must not be used as for diagnostic or other medical purposes.
St John's Laboratory Ltd, Knowledge Dock Business Centre, University Way, London, E16 2RD | Tel: 0208 223 3081